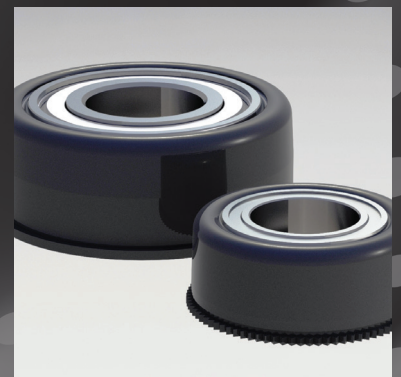
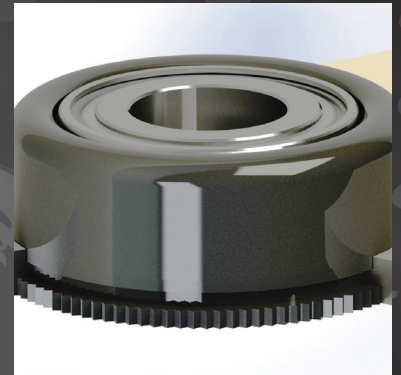




Bearing Solutions

SPECIALTY BEARINGS CATALOG



800.487.7601

► **CONTACT US FOR SALES AND DESIGN**

TABLE OF CONTENTS

INTRODUCTION	2
BEARING SOLUTIONS	
Composite	6
Bronze	8
Needle Rollers	10
Ball Bearings.....	12
Acetal	14
High Speed Acetal	16
SPYRAGUIDE™	18
SPYRASPACERS™	19

INTRODUCTION

► ABOUT SPYRAFLO

THIS IS HOW WE ROLL

OEM suppliers and engineers face a variety of complex challenges with seemingly hundreds of potential solutions.

With nearly 60 years of experience as both a manufacturer and designer of specialty bearings, Spyraflo has helped three generations of suppliers and engineers meet these challenges, their budgets, and their timelines.

We focus on the constant pursuit of quality with our ISO 9001:2015 registration so our diverse customer base can focus on creating amazing products. Browse our standard product line and contact us with any questions or to request samples.

From satellites and robotics to ATMs and printers, and everything in between, Spyraflo keeps you rolling.

WE LOVE A CHALLENGE

In addition to our broad standard product line, Spyraflo develops and manufactures custom bearing solutions to enhance a wide variety of unique applications. As your design partner, we can customize any of our existing products or develop a new solution tailored to your needs.

A few common examples of custom requests:

- Custom mounting dimensions such as length, housing style, and bolt patterns.
- Alternative materials and finishes to meet environmental or compliance regulations such as RoHS-compliant zinc passivate or electroless-nickel coatings.
- Non-standard bore dimensions to meet special shaft requirements.
- Complete research, design, and development of a solution that will best suit your application.



SPYRAFLO BEARING TYPES

Composite

Maintenance-free PTFE-composite bronze bearings are extremely high performance plain bearings. They perform exceptionally well in high-load, slow-speed applications.

Bronze

Our bronze bearings are ideal for applications where electrical current or static electricity must pass through the bearings and dissipate to the machine frame. Our bronze bearings are manufactured to SAE 840 standards utilizing the highest quality bronze material composition. Bronze bearings are oil impregnated, providing an economic and maintenance free solution catering to relatively high speed and medium load applications.

Needle Roller

Drawn-cup needle-roller bearings combine a narrow cross-section with the high performance of a rolling-element bearing. High-temperature grease, sealed and full-complement options are also available.

Ball Bearing

Spyraflo's self-aligning ball bearings are a revolutionary advancement in the precision, shielded ball bearing category. These ABEC 3 bearings self-align up to 5° to improve bearing performance and optimize operating life while lowering manufacturing cost and simplifying installation.

Acetal

Our acetal bearings are ideal for applications requiring a low coefficient of friction for rotary, oscillating or linear motion. Acetal bearing inserts are injection molded to a high degree of consistency, ensuring they meet the demands of a diverse range of applications.



INTRODUCTION

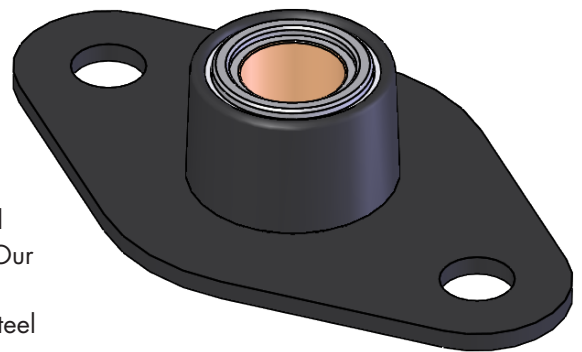
► ABOUT SPYRAFLO

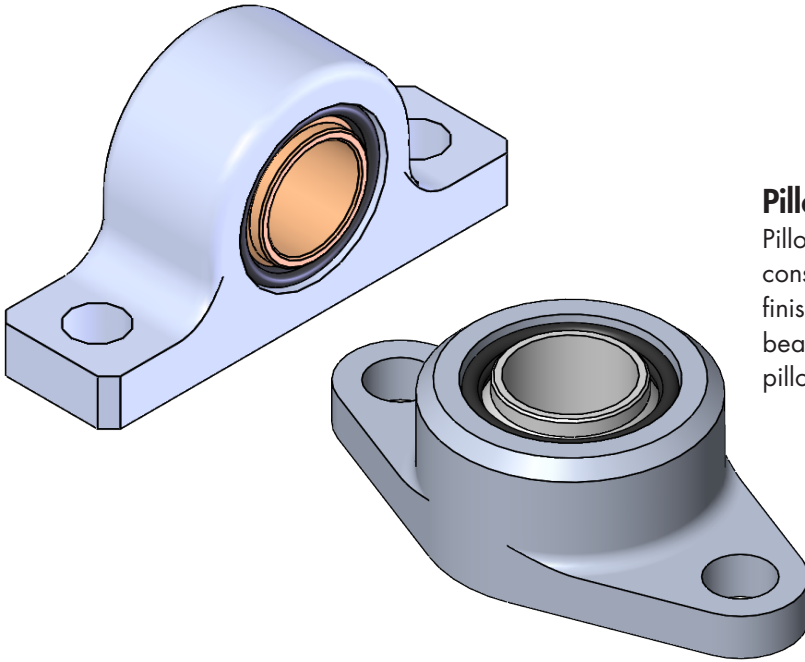
SPYRAFLO MOUNTING OPTIONS

Mounted bearings provide a simple means of supporting a shaft perpendicular or parallel to the mounting surface, and are convenient and easily replaceable. Spyraflo mounted bearings are available in plain or rolling-element mediums, and are self-lubricated and maintenance-free for the life of the bearing.

Flange Mount

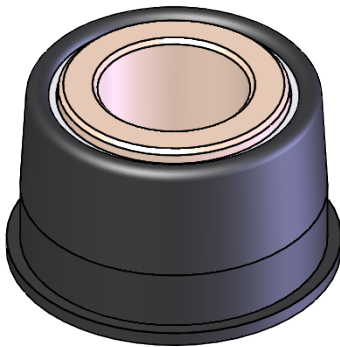
Our mounted bearings feature our self-clinching bearing units clinched into mounts for your convenience. Our steel flanges are very compact and have optional finishes or stainless steel construction with several corrosion-resistant options.





Pillow Block and Housing Flange

Pillow Blocks and Housing Flanges are of sintered metal construction, and are available with several corrosion-resistant finishes. Our mounted bearings feature our self-clinching bearing units clinched into housing flanges and aluminum pillow block mounts for your convenience.



Press-Fit

Our press-fit bearings allow designers to take advantage of the benefits of Spyraflo self-aligning bearings without making the bearing a permanent part of the component. Press-fit bearings are ideal for mounting into injection-molded panels, hard non-ductile materials or in applications where replaceability is important. Our press-fit bearings are designed to fit mounting holes with broader tolerances, which helps keep component costs to a minimum. Unlike other products which need the support of wide mounts, our press-fit bearings can be mounted into very thin components made from sheet metal, die castings, plastics, or even wood and laminates.



Self-Clinching

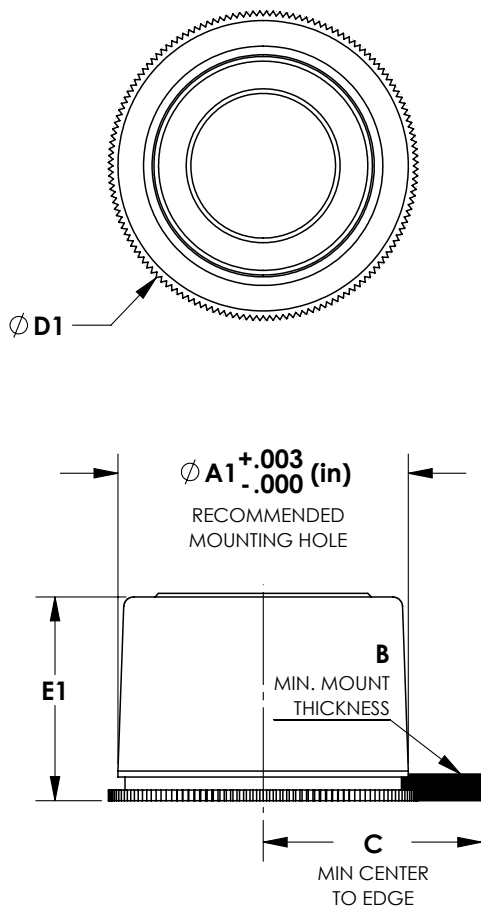
Need a compact, permanent solution to your design hurdle? Our self-clinching products can be mounted in sheet metal as thin as 0.04" (1mm). This mount type is resistant to vibration, shock, and side load. The housing protects the bearing from force exerted by the press during installation, maintaining the integrity of the bearing ID. Spyraflo is the premier developer and manufacturer of Self-Clinching bearings.

COMPOSITE BEARINGS

SPYRAFLO BEARINGS SOLUTIONS ▶



SELF-CLINCH



Maintenance-free PTFE-composite bronze bearings are **extremely high performance** plain bearings. They perform exceptionally well in **high-load, slow-speed** applications. This type of bearing is **chemical resistant, resilient** to particulate contamination, and **handles shock loads and short angular** oscillations.

SELF-CLINCH, PTFE IMPREGNATED (FSP=5° Self-Align, FSPN=Non-Align)

Part Number	ID Nominal	Max Load	Max Speed	A1	B	C	D1	E1
METRIC	mm	mm	mm	mm	mm	mm	mm	mm
FSPN-4M	4	883	9700	9.53	0.94	7.22	10.62	6.7
FSPN-6M	6	1986	6400	12.70	1.12	9.50	13.97	8.7
FSPN-8M	8	3530	4800	15.88	1.19	11.62	17.09	10.7
FSP-4M	4	1324	9700	12.70	1.30	9.53	14.02	10.2
FSP-6M	6	1986	6400	15.88	1.30	11.61	17.07	11.5
FSP-8M	8	3530	4800	15.88	1.30	11.61	17.07	11.5
FSP-10M	10	5516	3800	20.63	1.04	15.03	22.10	16.3
FSP-12M	12	6619	3200	20.63	1.04	15.03	22.10	15.9
FSP-15M	15	8274	2500	27.00	1.37	19.19	28.22	19.5
FSP-16M	16	8832	2400	27.00	1.37	19.19	28.22	19.5
FSP-18M	18	14893	2100	31.75	1.47	22.40	32.94	22.5
FSP-20M	20	11040	1900	31.75	1.47	22.40	32.94	22.5
FSP-25M	25	20684	1500	40.11	1.65	27.32	40.18	22.9
IMPERIAL	in.	in.	in.	in.	in.	in.	in.	in.
FSP-187	0.188	281	8100	0.500	0.051	0.375	0.552	0.40
FSP-250	0.250	750	6100	0.625	0.051	0.457	0.672	0.46
FSP-312	0.313	938	4800	0.625	0.051	0.457	0.672	0.46
FSP-375	0.375	1500	4000	0.812	0.041	0.592	0.870	0.64
FSP-500	0.500	2000	3000	1.063	0.054	0.755	1.111	0.77
FSP-625	0.625	2500	2400	1.250	0.058	0.882	1.297	0.89
FSP-750	0.750	3000	2000	1.250	0.058	0.882	1.297	0.87
FSP-875	0.875	5250	1700	1.579	0.065	1.076	1.582	0.90
FSP-1000	1.000	4000	1500	1.579	0.065	1.076	1.582	0.90

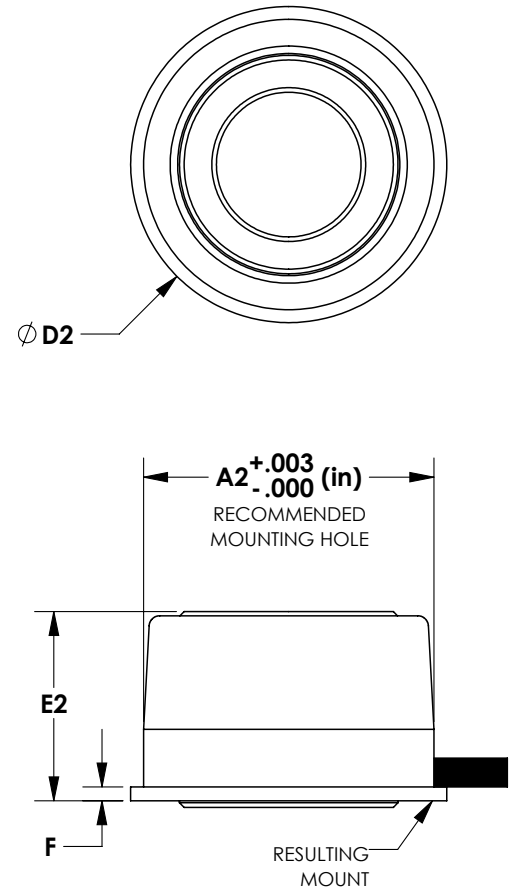
- Our team of design engineers can customize or modify any product to meet your specific needs.



PRESS FIT

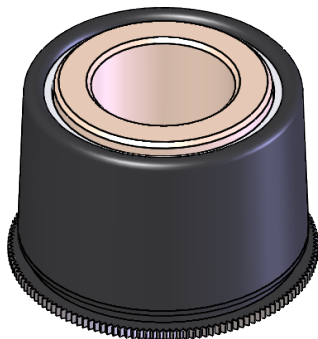
PRESS-FIT, 5° SELF-ALIGN, PTFE IMPREGNATED

Part Number	ID Nominal	Max Load	Max Speed	A2	D2	F	E2
METRIC	mm	mm	mm	mm	mm	mm	mm
PSP-4M	4	1324	9700	12.73	14.25	0.76	10.2
PSP-6M	6	1986	6400	15.88	17.37	0.76	11.5
PSP-8M	8	3530	4800	15.88	17.37	0.76	11.5
PSP-10M	10	5516	3800	20.63	22.17	0.76	16.3
PSP-12M	12	6619	3200	20.63	22.17	0.76	15.9
PSP-15M	15	8274	2500	26.98	28.52	0.76	19.5
PSP-16M	16	8832	2400	26.98	28.52	0.76	19.5
IMPERIAL	in.	in.	in.	in.	in.	in.	in.
PSP-187	0.188	281	8100	0.501	0.561	0.030	0.40
PSP-250	0.250	750	6100	0.625	0.684	0.030	0.46
PSP-312	0.313	938	4800	0.625	0.684	0.030	0.46
PSP-375	0.375	1500	4000	0.812	0.873	0.030	0.64
PSP-500	0.500	2000	3000	1.062	1.123	0.030	0.77
PSP-625	0.625	2500	2400	1.255	1.311	0.030	0.89



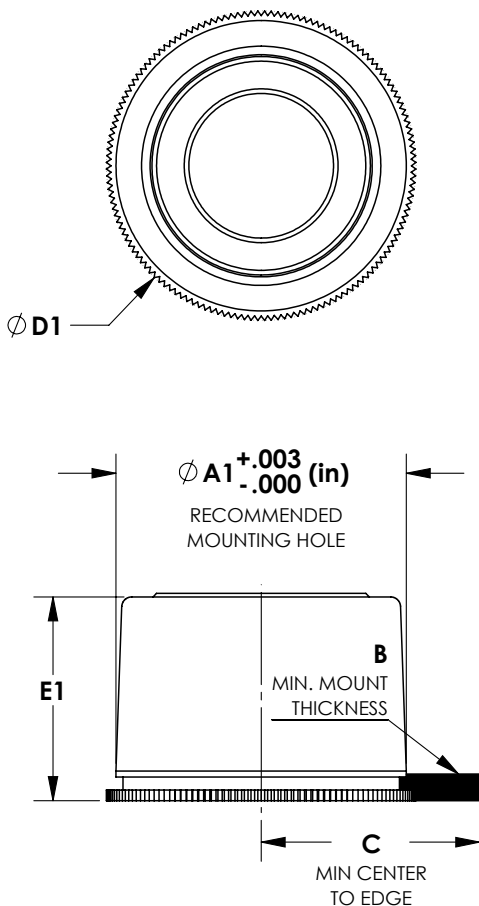
BRONZE BEARINGS

SPYRAFLO BEARINGS SOLUTIONS ▶



SELF-CLINCH

Our bronze bearings are manufactured to SAE 840 standards utilizing the highest quality bronze material composition. Bronze bearings are **oil impregnated**, providing an **economic** and **maintenance free** solution catering to **relatively high speed** and **medium load** applications. The porous bronze bearing insert acts as the oil reservoir so the rotation of the shaft creates a hydrodynamic action that draws oil to the surface, producing a film of lubricant between the bearing and



SELF-CINCH, 5° SELF-ALIGN, BRONZE

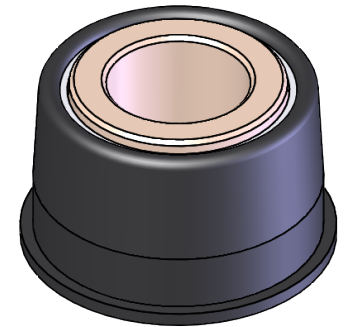
Part Number	ID Nominal	Max Load	Max Speed	A1	B	C	D1	E1
METRIC	mm	mm	mm	mm	mm	mm	mm	mm
FSB-6M	6	788	19400	12.70	1.30	9.53	14.02	10.2
FSB-8M	8	1191	14500	15.88	1.30	11.61	17.07	11.5
FSB-10M	10	1489	11600	15.88	1.30	11.61	17.07	11.5
FSB-12M	12	2522	9700	20.63	1.04	15.03	22.10	16.3
FSB-15M	15	3741	7700	27.00	1.37	19.19	28.22	19.4
FSB-16M	16	3990	7200	27.00	1.37	19.19	28.22	19.4
FSB-18M	18	5359	6400	31.75	1.47	22.40	32.94	22.5
FSB-20M	20	5954	5800	31.75	1.47	22.40	32.94	22.5
FSB-25M	25	6235	4600	40.11	1.65	27.32	40.18	22.5
FSB-30M	30	9278	3800	46.51	1.88	32.44	47.70	24.0
IMPERIAL	in.	in.	in.	in.	in.	in.	in.	in.
FSB-125	0.125	68	36600	0.344	0.038	0.267	0.392	0.29
FSB-187	0.188	141	24400	0.500	0.051	0.375	0.552	0.40
FSB-250	0.250	188	18300	0.500	0.051	0.375	0.552	0.40
FSB-312	0.313	266	14600	0.625	0.051	0.457	0.672	0.46
FSB-375	0.375	319	12200	0.625	0.051	0.457	0.672	0.46
FSB-500	0.500	600	9100	0.812	0.041	0.592	0.870	0.64
FSB-625	0.625	890	7300	1.063	0.054	0.755	1.111	0.77
FSB-750	0.750	1275	6100	1.250	0.058	0.882	1.297	0.89
FSB-1000	1.000	1426	4500	1.579	0.065	1.076	1.582	0.90
FSB-1250	1.250	2208	3600	1.831	0.074	1.277	1.878	0.95

the shaft. This provides **low friction** and **long service life**. These are ideal for applications **where electrical current or static electricity must pass through the bearings** and dissipate to the machine frame.

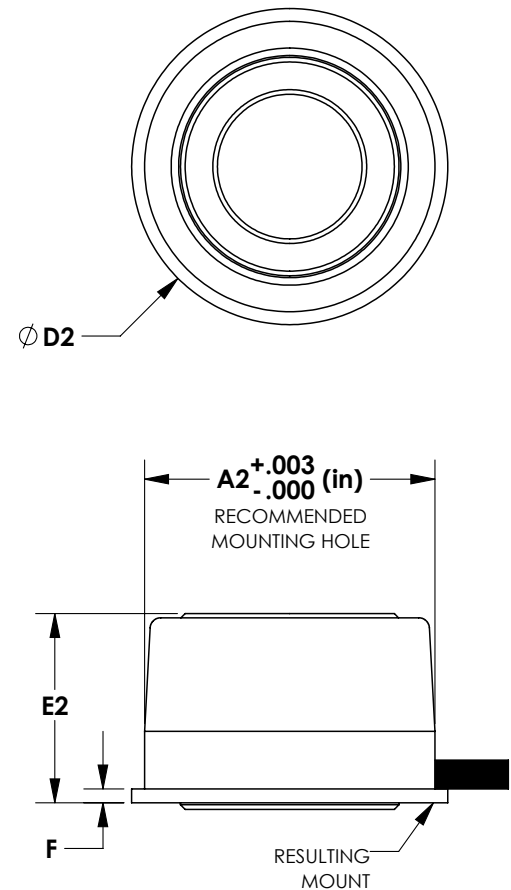
- *Our team of design engineers can customize or modify any product to meet your specific needs.*

PRESS FIT, 5° SELF-ALIGN, BRONZE

Part Number	ID Nominal	Max Load	Max Speed	A2	D2	F	E2
METRIC	mm	mm	mm	mm	mm	mm	mm
PSB-4M	4	525	29100	12.73	10.26	0.76	9.6
PSB-6M	6	788	19400	12.73	10.26	0.76	9.6
PSB-8M	8	1191	14500	15.88	17.37	0.76	10.8
PSB-10M	10	1489	11600	15.88	17.37	0.76	10.8
PSB-12M	12	2522	9700	20.63	22.17	0.76	15.2
PSB-15M	15	3741	7700	26.98	28.52	0.76	19.6
PSB-16M	16	3990	7200	26.98	28.52	0.76	19.6
IMPERIAL	in.	in.	in.	in.	in.	in.	in.
PSB-125	0.125	68	36600	0.344	0.404	0.030	0.27
PSB-187	0.188	141	24400	0.501	0.561	0.030	0.38
PSB-250	0.250	188	18300	0.501	0.561	0.030	0.38
PSB-312	0.313	266	14600	0.625	0.684	0.030	0.43
PSB-375	0.375	319	12200	0.625	0.684	0.030	0.43
PSB-500	0.500	600	9100	0.812	0.873	0.030	0.60
PSB-625	0.625	890	7300	1.062	1.123	0.030	0.77
PSB-750	0.750	1275	6100	1.255	1.311	0.030	0.85



PRESS FIT



NEEDLE ROLLER BEARINGS

SPYRAFLO BEARINGS SOLUTIONS ►

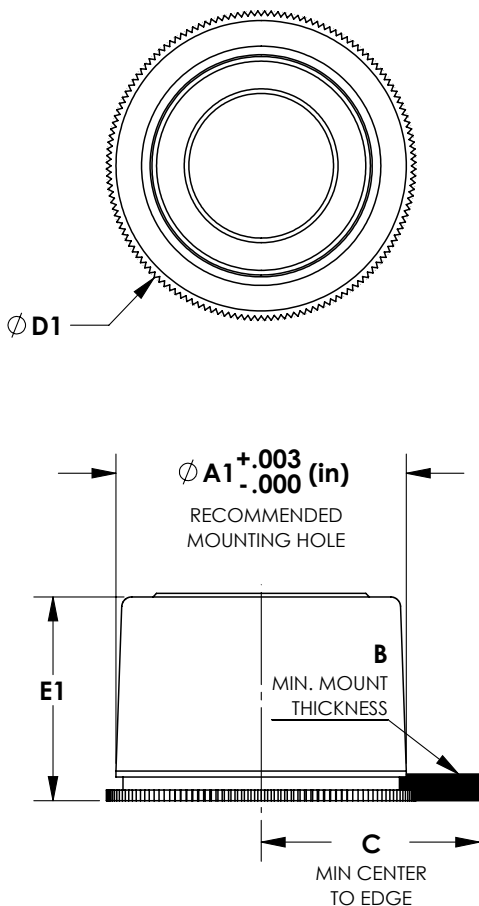


SELF-CLINCH

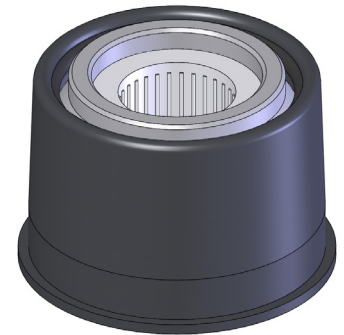
Drawn-cup needle-roller bearings combine a **narrow cross-section** with the **high performance** of a rolling-element bearing. A hardened shaft acts as the inner bearing raceway, with the needles generally being retained in a cage. The bearings are delivered **pre-lubricated** with a lithium-complex grease for optimum performance in normal operating conditions. High-temperature grease, sealed and full-complement options are also available.

SELF-CLINCH, NEEDLE ROLLERS (FSN = 5° Self-Align, FSNN = Non-Align)

Part Number	ID Nominal	Max Load STATIC	Max Load DYNAMIC	Max Speed	A1	B	C	D1	E1
METRIC	mm	mm	mm	mm	mm	mm	mm	mm	mm
FSN-4M	4	1310	1780	41000	15.88	1.30	11.61	17.07	11.6
FSN-6M	6	1650	2030	35000	15.88	1.30	11.61	17.07	11.6
FSN-8M	8	2600	2750	28000	20.63	1.04	15.03	22.10	16.3
FSN-10M	10	5100	4400	23000	20.63	1.04	15.03	22.10	16.3
FSN-12M	12	6200	4950	20000	27.00	1.37	19.19	28.22	19.5
FSN-15M	15	9400	7900	16000	31.75	1.47	22.40	32.94	22.5
FSN-16M	16	9700	7600	15000	31.75	1.47	22.40	32.94	22.5
IMPERIAL	in.	in.	in.	in.	in.	in.	in.	in.	in.
FSN-125	0.125	165	240	31500	0.500	0.051	0.375	0.552	0.40
FSN-187	0.188	550	630	21000	0.625	0.051	0.457	0.672	0.46
FSN-250	0.250	470	570	44000	0.625	0.051	0.457	0.672	0.46
FSN-312	0.313	590	650	35500	0.812	0.041	0.592	0.870	0.64
FSN-375	0.375	610	650	29500	0.812	0.041	0.592	0.870	0.64
FSN-500	0.500	1210	1040	22000	1.063	0.054	0.755	1.111	0.77
FSN-625	0.625	2700	1830	17600	1.250	0.058	0.882	1.297	0.89
FSN-750	0.750	2800	2210	14700	1.579	0.065	1.076	1.582	0.90
FSNN-125	0.125	165	240	31500	0.375	0.037	0.284	0.418	0.31
FSNN-187	0.187	550	630	21000	0.500	0.051	0.375	0.552	0.50
FSNN-250	0.250	470	570	44000	0.625	0.051	0.461	0.678	0.44
FSNN-312	0.312	590	650	35500	0.625	0.051	0.461	0.678	0.44
FSNN-375	0.375	610	650	29500	0.812	0.055	0.590	0.868	0.44
FSNN-500	0.500	1210	1040	22000	0.875	0.047	0.628	0.923	0.50
FSNN-625	0.625	2700	1830	17600	1.063	0.061	0.756	1.112	0.62
FSNN-750	0.750	2800	2210	14700	1.250	0.060	0.882	1.297	0.63



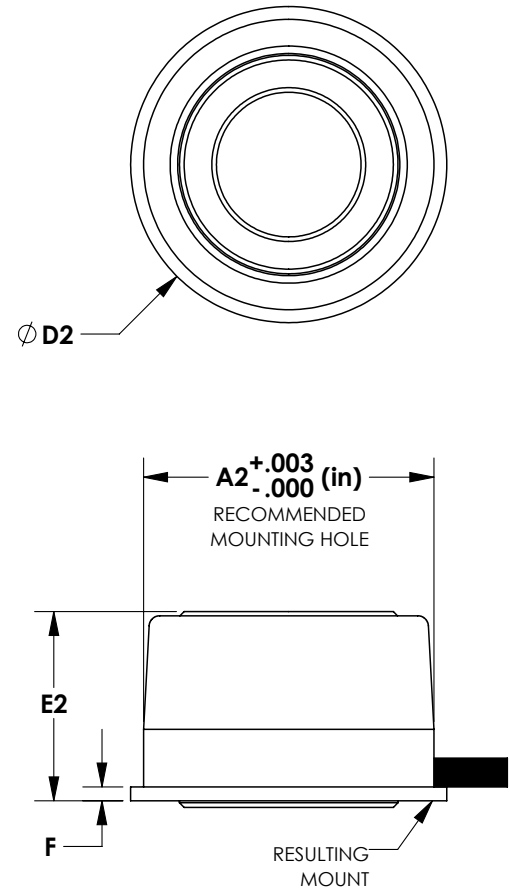
- Our team of design engineers can customize or modify any product to meet your specific needs.



PRESS FIT

PRESS-FIT, 5° SELF-ALIGN, NEEDLE ROLLER

Part Number	ID Nominal	Max Load STATIC	Max Load DYNAMIC	Max Speed	A2	D2	F	E2
METRIC	mm	mm	mm	mm	mm	mm	mm	mm
PSN-4M	4	1310	1780	41000	15.88	17.37	0.76	10.8
PSN-6M	6	1650	2030	35000	15.88	17.37	0.76	10.8
PSN-8M	8	2600	2750	28000	20.63	22.17	0.76	15.2
PSN-10M	10	5100	4400	23000	20.63	22.17	0.76	15.2
PSN-12M	12	6200	4950	20000	26.98	28.52	0.76	19.6
PSN-15M	15	9400	7900	16000	31.88	33.30	0.76	21.6
PSN-16M	16	9700	7600	15000	31.88	33.30	0.76	21.6
IMPERIAL	in.	in.	in.	in.	in.	in.	in.	in.
PSN-125	0.125	165	240	31500	0.501	0.561	0.030	0.37
PSN-187	0.188	550	630	21000	0.625	0.684	0.030	0.43
PSN-250	0.250	470	570	44000	0.625	0.684	0.030	0.43
PSN-312	0.313	590	650	35500	0.812	0.873	0.030	0.60
PSN-375	0.375	610	650	29500	0.812	0.873	0.030	0.60
PSN-500	0.500	1210	1040	22000	1.062	1.123	0.030	0.77
PSN-625	0.625	2700	1830	17600	1.255	1.311	0.030	0.85



BALL BEARINGS

SPYRAFLO BEARINGS SOLUTIONS ▶

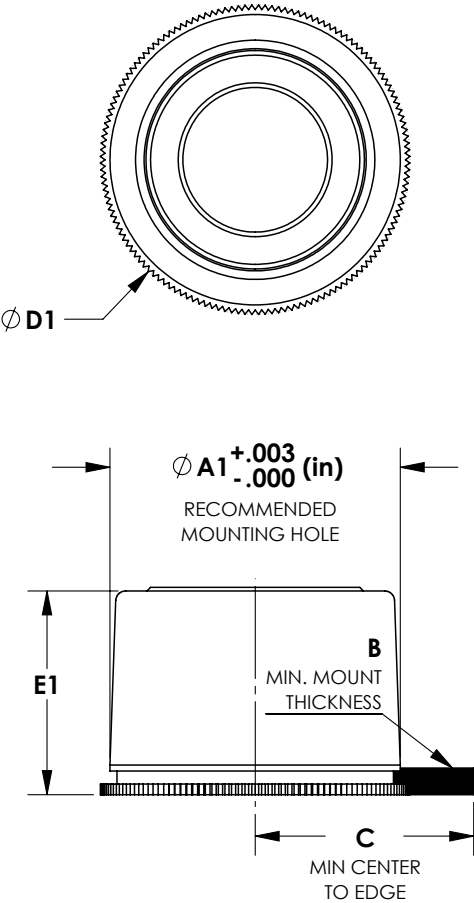


SELF-CLINCH

Spyraflo’s self-aligning ball bearings are a revolutionary advancement in the precision, shielded ball bearing category. These ABEC 3 bearings **self-align** up to 5° to **improve bearing performance** and **reduce alignment and assembly problems**, while lowering manufacturing cost and simplifying installation. These bearings have distinct advantages over open-race bearings since they protect rolling elements from particulate contamination throughout the full range of alignment. The **low friction coefficient** and performance of the bearings often

SELF-CLINCH, 5° SELF-ALIGN, BALL BEARING

Part Number	ID Nominal	Max Load Static	Max Load Dynamic	Max Speed	A1	B	C	D1 (or Spline Dia)	E1
METRIC	mm	mm	mm	mm	mm	mm	mm	mm	mm
SBS1-5M	5	275	544	40000	16.26	1.50	11.20	17.5	7.2
SBS1-6M	6	275	544	40000	16.26	1.50	11.20	17.5	7.2
SBS1-8M	8	275	544	40000	16.26	1.50	11.20	17.5	7.2
SBS2-10M	10	839	1716	37000	23.98	1.90	18.50	25.4	10.0
IMPERIAL	in.	in.	in.	in.	in.	in.	in.	in.	in.
SBS1-187	0.188	61	122	40000	0.640	0.060	0.440	0.69	0.28
SBS1-250	0.250	61	122	40000	0.640	0.060	0.440	0.69	0.28
SBS1-312	0.313	61	122	40000	0.640	0.060	0.440	0.69	0.28
SBS2-375	0.375	188	385	37000	0.944	0.074	0.718	1.00	0.38



reduces the drive requirements of the product or device. This may allow a smaller motor or actuator to be used, resulting in reduced cost, weight and total energy consumption throughout the life of the product.

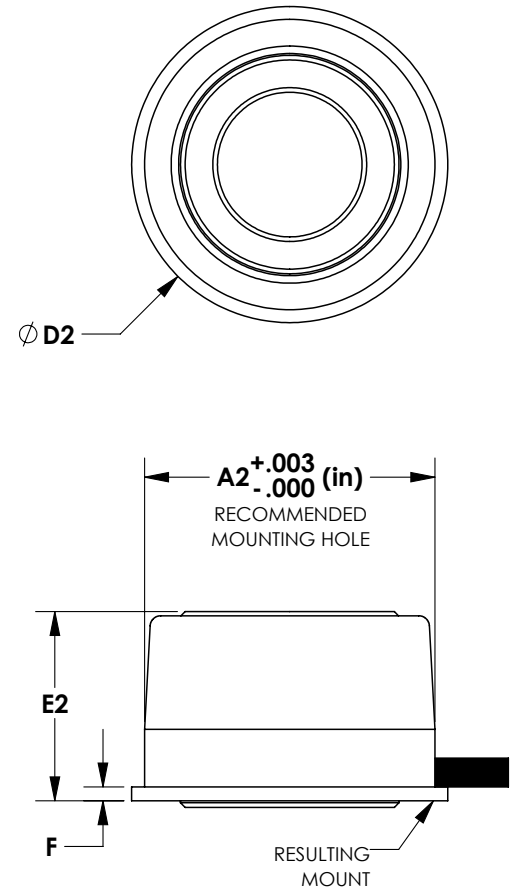
- *Our team of design engineers can customize or modify any product to meet your specific needs.*

PRESS-FIT, 5° SELF-ALIGN, BALL BEARING

Part Number	ID Nominal	Max Load Static	Max Load Dynamic	Max Speed	A2	D2 (or Spline Dia)	F	E2
METRIC	mm	mm	mm	mm	mm	mm	mm	mm
PBS1-5M	5	275	544	40000	16.26	17.5	0.75	7.2
PBS1-6M	6	275	544	40000	16.26	17.5	0.75	7.2
PBS1-8M	8	275	544	40000	16.26	17.5	0.75	7.2
PBS2-10M	10	839	1716	37000	23.95	25.4	0.75	10.0
IMPERIAL	in.	in.	in.	in.	in.	in.	in.	in.
PBS1-187	0.188	61	122	40000	0.640	0.69	0.03	0.28
PBS1-250	0.250	61	122	40000	0.640	0.69	0.03	0.28
PBS1-312	0.313	61	122	40000	0.640	0.69	0.03	0.28
PBS2-375	0.375	188	385	37000	0.943	1.00	0.03	0.38



PRESS FIT

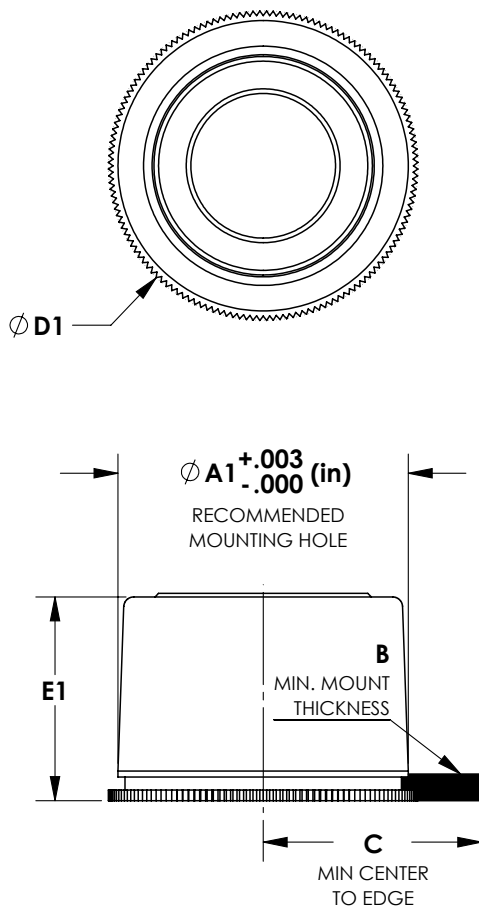


ACETAL BEARINGS

SPYRAFLO BEARINGS SOLUTIONS ▶



SELF-CLINCH



Our acetal bearings are ideal for supporting **rotary, oscillating, or linear motion**. This chemically lubricated acetal polymer has a **low coefficient of friction, high strength and rigidity** over a broad temperature range, and is an **ideal solution for wash down environments**. Acetal bearings are manufactured to a high standard of dimensional consistency, ensuring they meet the demands of a diverse range of applications.

SELF-CLINCH, 5° SELF-ALIGN, STANDARD ACETAL

Part Number	ID Nominal	Max Load	Max Speed	A1 (A)	B	D1	C	E1
METRIC	mm	mm	mm	mm	mm	mm	mm	mm
FSD-2M	2	63	4800	5.94	0.97	7.16	4.87	4.9
FSD-4M	4	153	2400	7.54	0.94	8.69	5.91	6.0
FSD-6M	6	273	1600	9.53	1.12	10.59	7.20	6.9
FSD-6M-3	6	394	1600	12.70	1.30	14.02	9.53	10.2
FSD-8M	8	525	1200	13.89	0.94	15.29	10.40	10.0
FSD-8M-3	8	595	1200	15.88	1.30	17.07	11.61	11.5
FSD-10M	10	744	900	15.88	1.30	17.07	11.61	11.4
FSD-12M	12	1330	800	20.63	1.04	22.10	15.03	16.5
FSD-15M	15	1870	600	27.00	1.37	28.22	19.19	19.4
FSD-16M	16	1995	600	27.00	1.37	28.22	19.19	19.4
FSD-18M	18	2679	500	31.75	1.47	32.94	22.40	22.4
FSD-20M	20	2977	450	31.75	1.47	32.94	22.40	22.4
FSD-25M	25	3117	350	40.11	1.65	40.18	27.32	22.9
IMPERIAL	in.	in.	in.	in.	in.	in.	in.	in.
FSD-093	0.094	17	4100	0.234	0.038	0.282	0.192	0.19
FSD-125	0.125	27	3000	0.297	0.037	0.342	0.233	0.23
FSD-187	0.188	49	2000	0.375	0.044	0.417	0.284	0.28
FSD-187-3	0.188	70	2000	0.500	0.051	0.552	0.375	0.40
FSD-250	0.250	65	1500	0.375	0.037	0.417	0.284	0.28
FSD-250-3	0.250	94	1500	0.500	0.051	0.552	0.375	0.40
FSD-312	0.313	117	1200	0.547	0.051	0.602	0.409	0.39
FSD-312-3	0.313	133	1200	0.625	0.041	0.672	0.457	0.39
FSD-375	0.375	185	1000	0.625	0.054	0.672	0.457	0.45
FSD-500	0.500	317	700	0.812	0.054	0.870	0.592	0.65
FSD-625	0.625	445	600	1.063	0.058	1.111	0.755	0.77
FSD-750	0.750	638	500	1.250	0.058	1.297	0.882	0.90
FSD-1000	1.000	713	350	1.579	0.065	1.582	1.076	0.90

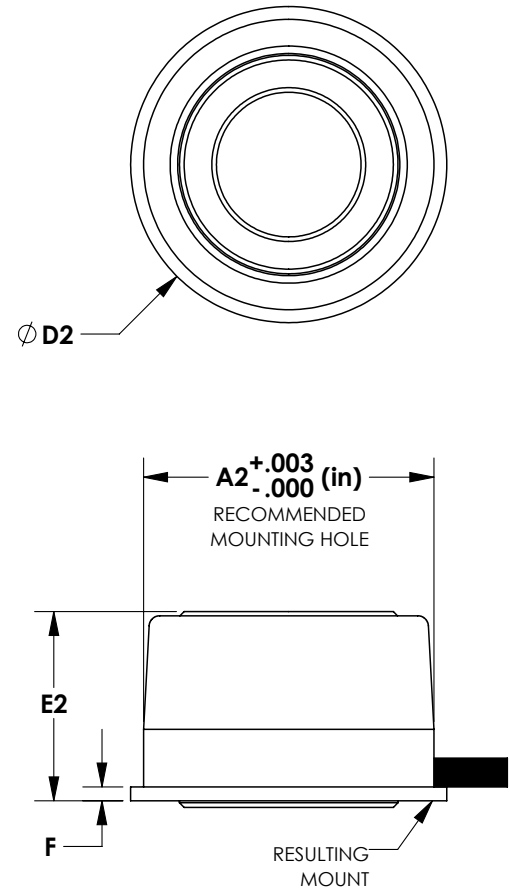
- Our team of design engineers can customize or modify any product to meet your specific needs.



PRESS FIT

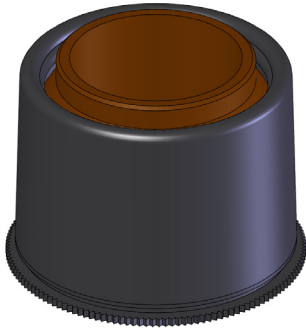
PRESS-FIT, 5° SELF-ALIGN, STANDARD ACETAL

Part Number	ID Nominal	Max Load	Max Speed	A2	D2	F	E2
METRIC	mm	mm	mm	mm	mm	mm	mm
PSD-4M	4	153	2400	12.73	14.25	0.76	9.6
PSD-6M	6	273	1600	12.73	14.25	0.76	9.6
PSD-8M	8	595	1200	15.88	17.37	0.76	10.8
PSD-10M	10	744	900	15.88	17.37	0.76	10.8
PSD-12M	12	1330	800	20.63	22.17	0.76	14.9
PSD-15M	15	1870	600	26.98	28.52	0.76	19.6
PSD-16M	16	1995	600	26.98	28.52	0.76	19.6
IMPERIAL	in.	in.	in.	in.	in.	in.	in.
PSD-125	0.125	34	3000	0.344	0.404	0.03	0.27
PSD-187	0.188	70	2000	0.501	0.561	0.03	0.38
PSD-250	0.250	94	1500	0.501	0.561	0.03	0.38
PSD-312	0.313	133	1200	0.625	0.684	0.03	0.43
PSD-375	0.375	160	1000	0.625	0.684	0.03	0.43
PSD-500	0.500	317	700	0.812	0.873	0.03	0.60
PSD-625	0.625	445	600	1.062	1.123	0.03	0.77



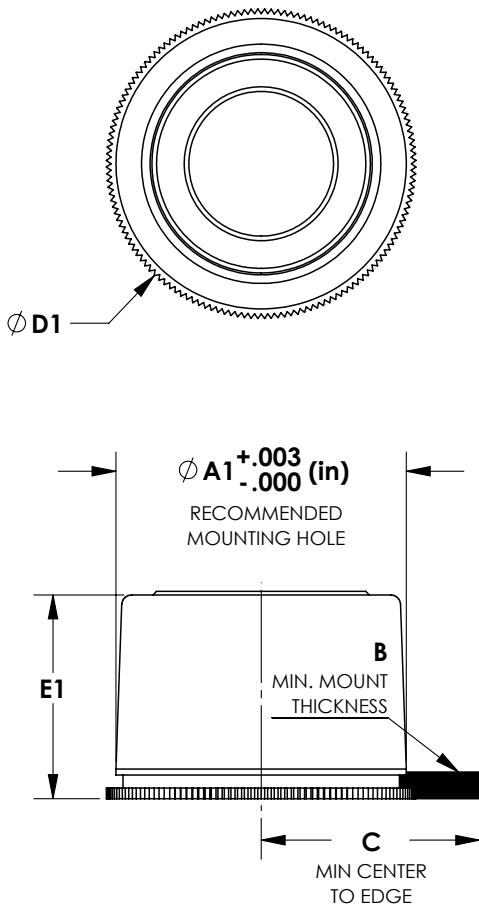
HIGH SPEED ACETAL BEARINGS

SPYRAFLO BEARINGS SOLUTIONS ▶



SELF-CLINCH

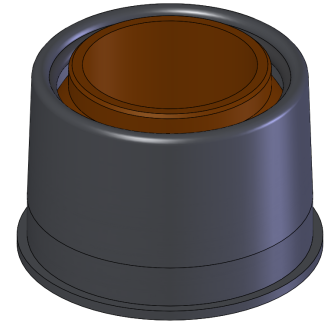
Our high speed acetal bearings make a good alternative to standard acetal when **increased performance** is the goal. This material blend includes 20% PTFE fibers and **doubles the peak velocity** capability. It also increases shaft lubrication, giving outstanding **low-wear** characteristics.



SELF-CLINCH, 5° SELF-ALIGN, HIGH SPEED ACETAL

Part Number	ID Nominal	Max Load	Max Speed	A1	B	C	D1	E1
METRIC	mm	mm	mm	mm	mm	mm	mm	mm
FSD-2M-AF	2	57	9700	5.94	0.97	4.87	7.16	4.9
FSD-4M-AF	4	138	4800	7.54	0.94	5.91	8.69	6.0
FSD-6M-AF	6	246	3200	9.53	1.12	7.20	10.59	6.9
FSD-6M-AF-3	6	355	3200	12.70	1.30	9.53	14.02	10.2
FSD-8M-AF	8	473	2400	13.89	0.94	10.40	15.29	10.0
FSD-8M-AF-3	8	536	2400	15.88	1.30	11.61	17.07	11.5
FSD-10M-AF	10	670	1900	15.88	1.30	11.61	17.07	11.4
FSD-12M-AF	12	1197	1600	20.63	1.04	15.03	22.10	16.5
FSD-15M-AF	15	1683	1200	27.00	1.37	19.19	28.22	19.4
FSD-16M-AF	16	1796	1200	27.00	1.37	19.19	28.22	19.4
FSD-18M-AF	18	2411	1000	31.75	1.47	22.40	32.94	22.4
FSD-20M-AF	20	2679	900	31.75	1.47	22.40	32.94	22.4
FSD-25M-AF	25	2806	700	40.11	1.65	27.32	40.18	22.9
IMPERIAL	in.	in.	in.	in.	in.	in.	in.	in.
FSD-093-AF	0.094	15	8200	0.234	0.038	0.159	0.282	0.19
FSD-125-AF	0.125	25	6000	0.297	0.037	0.202	0.342	0.23
FSD-187-AF	0.188	44	4000	0.375	0.044	0.255	0.417	0.28
FSD-187-AF-3	0.188	63	4000	0.500	0.051	0.340	0.552	0.40
FSD-250-AF	0.250	59	3000	0.375	0.044	0.255	0.417	0.28
FSD-250-AF-3	0.250	84	3000	0.500	0.051	0.340	0.552	0.40
FSD-312-AF	0.313	105	2400	0.547	0.037	0.372	0.602	0.39
FSD-312-AF-3	0.313	120	2400	0.625	0.051	0.425	0.672	0.39
FSD-375-AF	0.375	166	2000	0.625	0.051	0.425	0.672	0.45
FSD-500-AF	0.500	285	1500	0.812	0.041	0.552	0.870	0.65
FSD-625-AF	0.625	401	1200	1.063	0.054	0.723	1.111	0.77
FSD-750-AF	0.750	574	1000	1.250	0.058	0.850	1.297	0.90
FSD-1000-AF	1.000	642	700	1.579	0.065	1.074	1.582	0.90

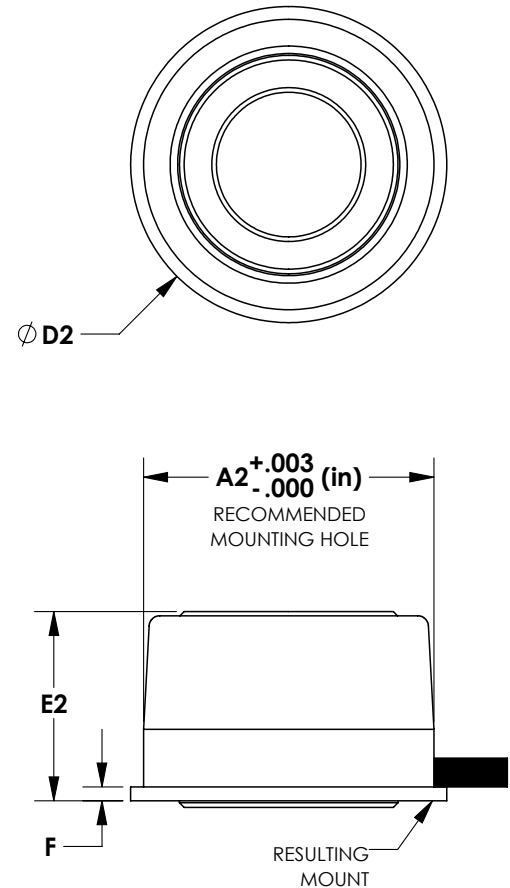
- Our team of design engineers can customize or modify any product to meet your specific needs.

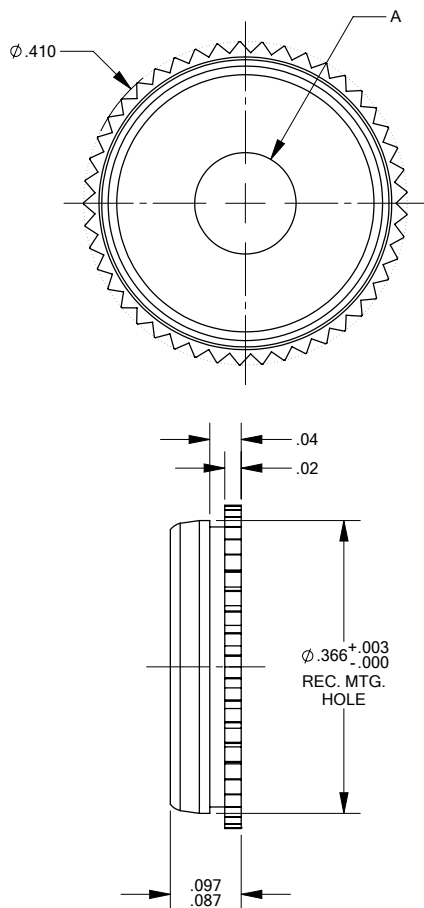
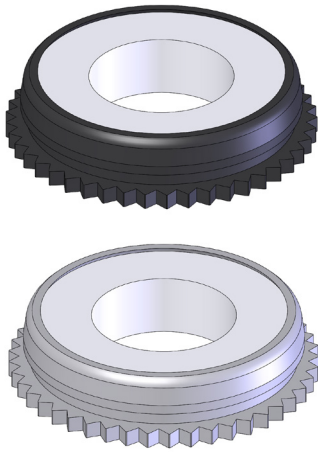


PRESS FIT

PRESS-FIT, 5° SELF-ALIGN, HIGH SPEED ACETAL

Part Number	ID Nominal	Max Load	Max Speed	A2	D2	F	E2
METRIC	mm	mm	mm	mm	mm	mm	mm
PSD-4M-AF	4	138	4800	12.73	14.25	0.76	9.6
PSD-6M-AF	6	355	3200	12.73	14.25	0.76	9.6
PSD-8M-AF	8	536	2400	15.88	17.37	0.76	10.8
PSD-10M-AF	10	670	1900	15.88	17.37	0.76	10.8
PSD-12M-AF	12	1197	1600	20.63	22.17	0.76	14.9
PSD-15M-AF	15	1683	1200	26.98	28.52	0.76	19.6
PSD-16M-AF	16	1796	1200	26.98	28.52	0.76	19.6
IMPERIAL	in.	in.	in.	in.	in.	in.	in.
PSD-125-AF	0.125	30	6100	0.344	0.404	0.03	0.27
PSD-187-AF	0.188	63	4000	0.501	0.561	0.03	0.38
PSD-250-AF	0.250	84	3000	0.501	0.561	0.03	0.38
PSD-312-AF	0.313	120	2400	0.625	0.684	0.03	0.43
PSD-375-AF	0.375	143	2000	0.625	0.684	0.03	0.43
PSD-500-AF	0.500	285	1500	0.812	0.873	0.03	0.60
PSD-625-AF	0.625	401	1200	1.062	1.123	0.03	0.77





When used as a shaft support, the SPYRAGUIDE solution is designed to provide an economical guide for static shaft conditions. The acetal resin insert also acts as a bearing surface that supports occasional operation at slow speeds.

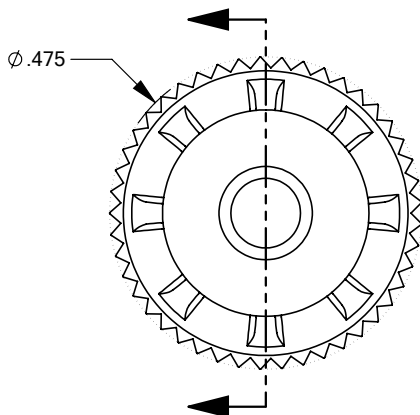
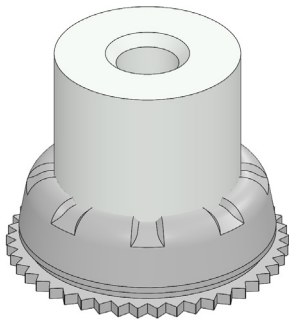
When used as a feed-thru guide, the SPYRAGUIDE component provides an insulated and smooth passage through panels making it an ideal solution for wire or cable feeding. The SPYRAGUIDE solutions mount flush to your panel, are low profile, and only require a small footprint of space for mounting. They are available in mild or stainless steel housings to meet your panel-mounting needs.

► Please contact Spyraflo for additional sizing and custom solutions.

Stock Code	Material	A (ID)
FMS-125	Mild Steel - Black Oxide / Acetal	.1285 - .1335
FMS-187	Mild Steel - Black Oxide / Acetal	.1915 - .1965
FMS-250	Mild Steel - Black Oxide / Acetal	.2535 - .2585
FMS-4M	Mild Steel - Black Oxide / Acetal	.1610 - .1654
FMS-6M	Mild Steel - Black Oxide / Acetal	.2398 - .2441
FMSS-125	Stainless - Passivated / Acetal	.1285 - .1335
FMSS-187	Stainless - Passivated / Acetal	.1915 - .1965
FMSS-250	Stainless - Passivated / Acetal	.2535 - .2585
FMSS-4M	Stainless - Passivated / Acetal	.1610 - .1654
FMSS-6M	Stainless - Passivated / Acetal	.2398 - .2441

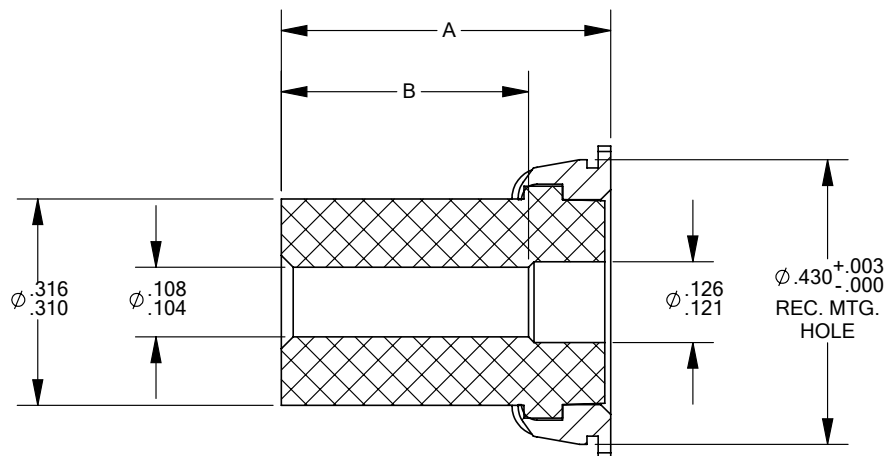
SPYRASPACERS™

THREAD-READY STANDOFFS ▶



SPYRASPACER standoffs are available pre-threaded or with a thread-ready bore and offer a permanent, strong mount to thin panels. These spacers offer a rigid, non-conductive solution that flush-mount to your panel and are designed for easy and permanent installation. The construction of the SPYRASPACER prevents material displacement or unwanted rotation during the service life.

▶ Please contact Spyraflo for additional sizing options.



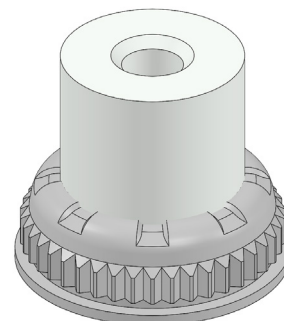
Stock Code	Material	A	B
HSD-106-04	Mild Steel - Black Oxide / Acetal	0.250	0.125
HSD-106-06	Mild Steel - Black Oxide / Acetal	0.375	0.250
HSD-106-08	Mild Steel - Black Oxide / Acetal	0.500	0.375
HSD-106-10	Mild Steel - Black Oxide / Acetal	0.625	0.375
HSD-106-12	Mild Steel - Black Oxide / Acetal	0.750	0.375
HSD-106-16	Mild Steel - Black Oxide / Acetal	1.000	0.375
HSD-106-8M	Mild Steel - Black Oxide / Acetal	0.312	0.187

Stock Code	Material	A	B
HSSD-106-04	Stainless - Passivated / Acetal	0.250	0.125
HSSD-106-06	Stainless - Passivated / Acetal	0.375	0.250
HSSD-106-08	Stainless - Passivated / Acetal	0.500	0.375
HSSD-106-10	Stainless - Passivated / Acetal	0.625	0.375
HSSD-106-12	Stainless - Passivated / Acetal	0.750	0.375
HSSD-106-16	Stainless - Passivated / Acetal	1.000	0.375
HSSD-106-8M	Stainless - Passivated / Acetal	0.312	0.187



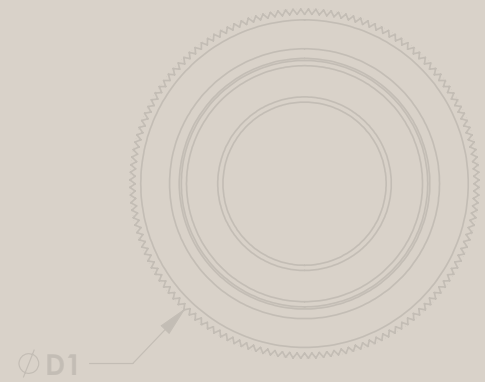
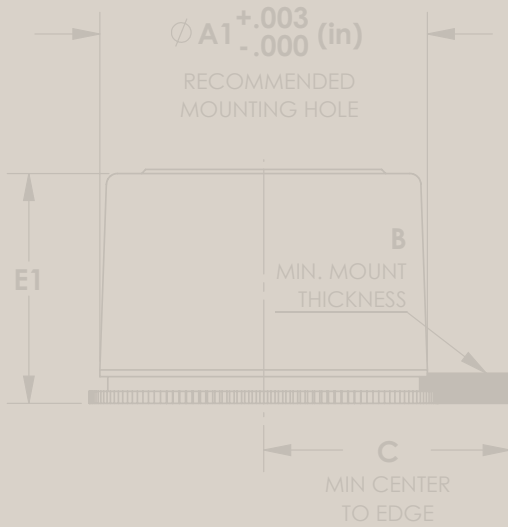
Thread-ready SPYRASPACER PCBs, also available pre-threaded or with a thread-ready bore, are a great solution for non-metal panel mounts such as printed circuit boards or base materials such as resin, nylon, fiber board, glass, acrylic, or canvas. These compact solutions require less mounting force than our standard self-clinch design but are still resistant to material displacement or rotation during service life. The SPYRASPACER PCB is non-conductive and available as pre-threaded or with a thread-ready bore.

▶ Please contact Spyraflo for sizing options.



© 2006 The Authors
Journal compilation © 2006 Blackwell Publishing Ltd

[illegible]



404 Dividend Drive
 Peachtree City, Georgia 30269
 (t) 800-487-7601 or 770-631-9990
 (f) 770-487-9299
 sales@spyraflo.com
spyraflo.com

